



£230,000

2 Bedroom Detached Bungalow for sale
30 HOLLYS ROAD, YOXALL, BURTON-ON-TRENT



EweMove
SALES AND LETTINGS



Overview

BOOK YOUR VIEWING VIA OUR EWEMOVE WEBSITE OR CALL 24/7! Introducing Renovator's Haven, a property brimming with potential and awaiting your personal touch presents a rare chance to create your dream home in a prime location, just moments away from local shops and amenities.



Key Features

- Call NOW 24/7 or book instantly online to View
- Renovation Opportunity
- 2 Bedroom Bungalow
- Generous Corner Plot
- Private Parking & Detached Garage
- Welcoming Neighbourhood
- Close to Excellent Local Amenities
- Sought After Village



BOOK YOUR VIEWING VIA OUR EWEMOVE WEBSITE OR CALL 24/7! Introducing Renovator's Haven, a property brimming with potential and awaiting your personal touch presents a rare chance to create your dream home in a prime location, just moments away from local shops and amenities

The bungalow sits on a generous corner plot, along with the convenience of a detached single garage to the rear. Step through the front door and into the spacious entrance hall, where your renovation journey begins.

The kitchen awaits a stylish transformation, ready to be re-imagined to suit your culinary aspirations. Continuing through, you'll discover the generous lounge bathed in natural light, courtesy of a large front-facing window. This inviting space beckons you to design the perfect setting for relaxation and entertainment.

An inner hallway leads to a bathroom and two double bedrooms at the rear of the property, providing peaceful retreats for restful nights. One of the bedrooms even grants direct access to the rear garden via a small conservatory, seamlessly blending indoor and outdoor living.

Speaking of the garden, prepare to be enchanted by its tranquil beauty. With a delightful patio area and a well-maintained, low maintenance design you can simply relax & unwind.

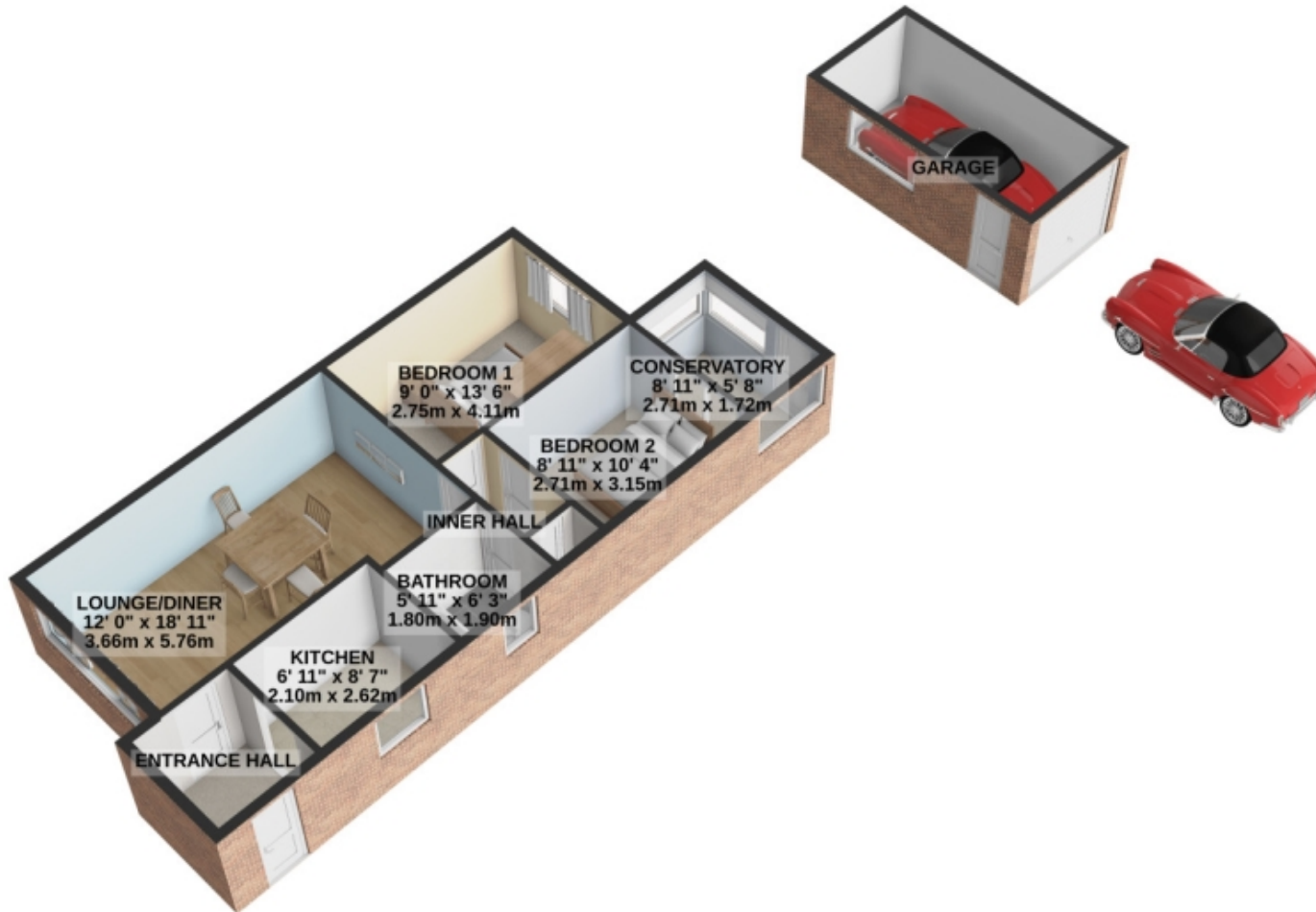
Yoxall is a friendly community located in a rural setting in Staffordshire on the edge of the National Forest, with the River Swarbourn meandering through. Yoxall enjoys an excellent village atmosphere. There are 3 well established public houses; The Golden Cup, The Crown and The Forresters, and a local convenience store with a Post Office. There is also a reliable bus service to Lichfield, Burton and the villages in between.



This remarkable opportunity to create a home perfectly tailored to your taste and aspirations won't last long. Don't miss out on the chance to embark on a renovation journey that promises endless rewards. Schedule a viewing today and let your imagination soar as you envision the possibilities that await in this coveted location.

Floorplans

GROUND FLOOR
764 sq.ft. (71.0 sq.m.) approx.



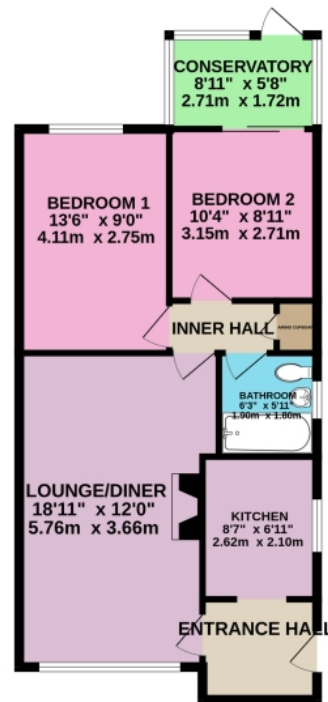
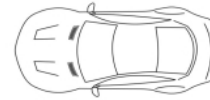
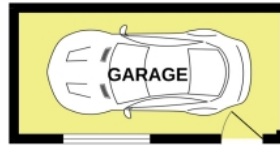
TOTAL FLOOR AREA : 764 sq.ft. (71.0 sq.m.) approx.

For illustrative purposes only. Decorative finishes, fixtures, fittings and furnishings do not represent the current state of the property. Measurements are approximate. Not to scale.

Made with Metropix © 2024

Floorplans

GROUND FLOOR
764 sq.ft. (71.0 sq.m.) approx.



TOTAL FLOOR AREA : 764 sq.ft. (71.0 sq.m.) approx.

Whilst every attempt has been made to ensure the accuracy of the floorplan contained here, measurements of doors, windows, rooms and any other items are approximate and no responsibility is taken for any error, omission or mis-statement. This plan is for illustrative purposes only and should be used as such by any prospective purchaser. The services, systems and appliances shown have not been tested and no guarantee as to their operability or efficiency can be given.
Made with MetroPix ©2024

EPC

The EPC will be available within 28 days or the property may be exempt, please speak to us for more details.

Marketed by Ewemove Barton-Under-Needwood

01543 624118 (24/7)
barton@ewemove.com

